

DÜĞÂH

İtrî merhumun "Râst" makamındaki mevlâ nâti serîfinin
1-1-1958 "Düzâh" makamına naklen bestesidir. Terkipleyen H. Kemal Batanay.

Ya hazre-ti nev- lâ na..... Hakdost....

..... Yaha-bi-ballahre- su- - lî ha-likı yek tatü yi

..... Har-ka-ki -ni zülcelâli pakûbhem
ber gü-zi

ta-tü yi..... dost..... Sulta-nım.....

..... na-zenini hazreti

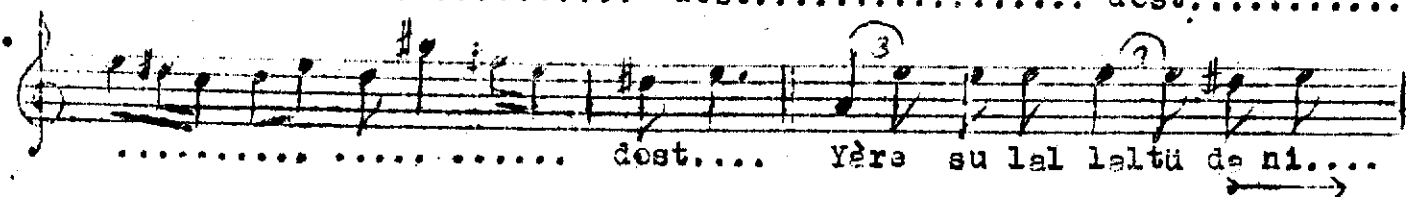
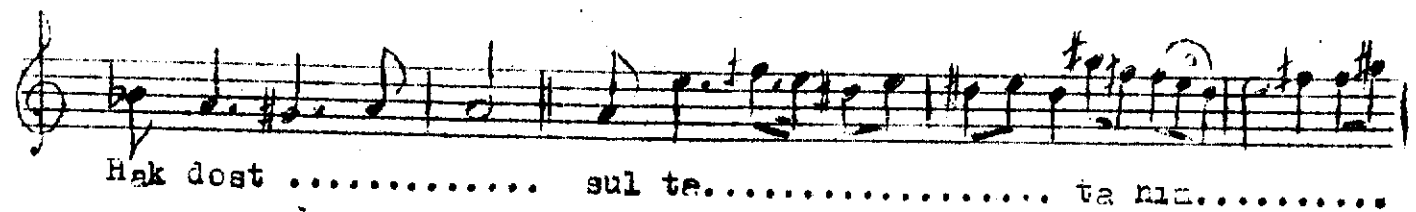
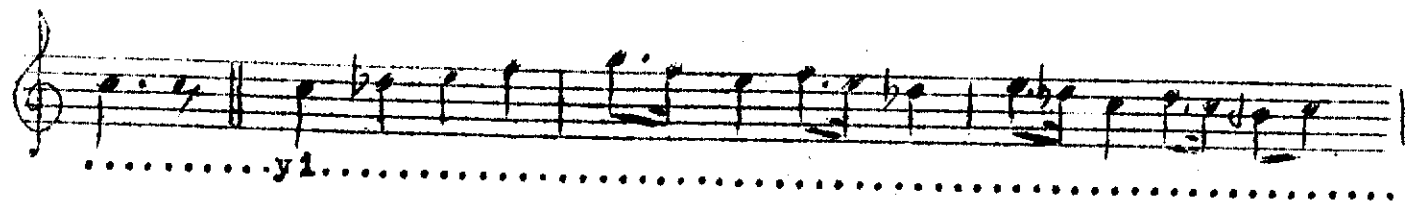
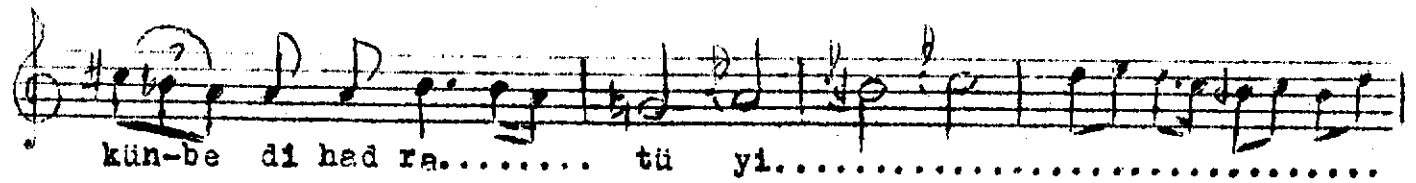
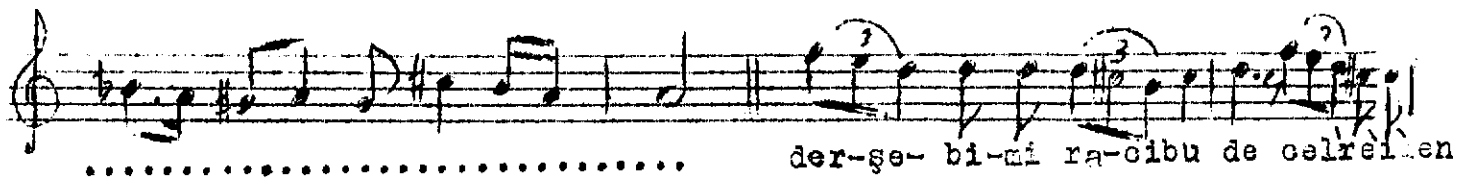
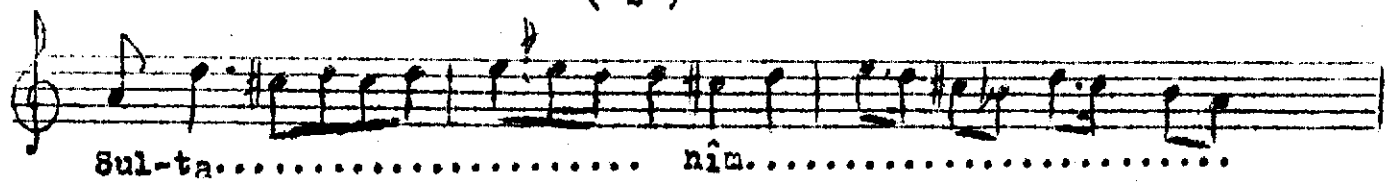
Hak sed ri be-dî - kâ - i- nat.....

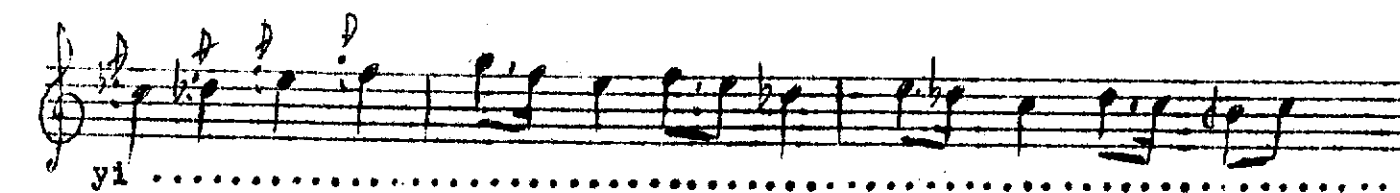
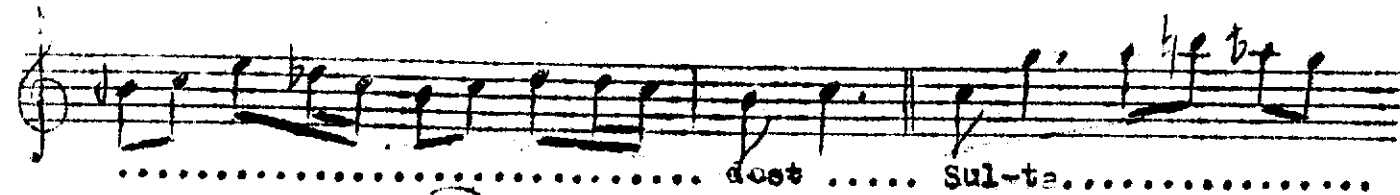
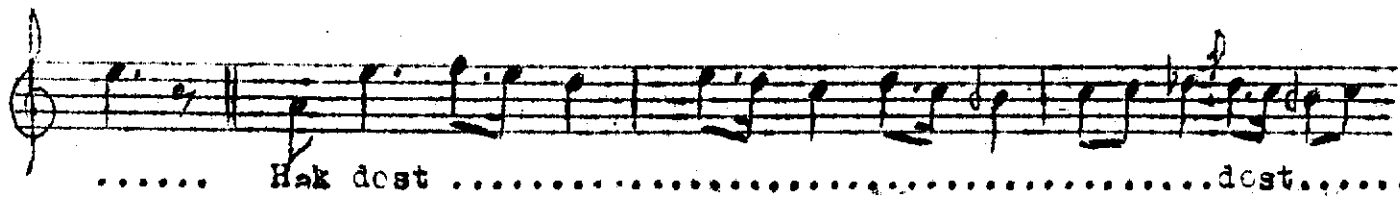
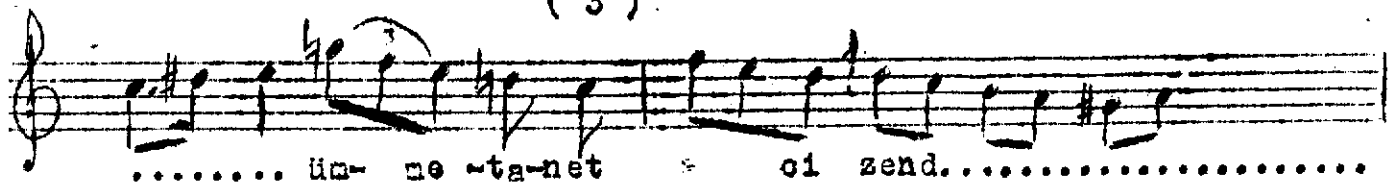
No-ri çeş-mi en-bi-ya çeş
mi - çe-ra-gi ma- - tû-yi....

..... yi.....

..... Ya mevlâ

..... na..... Hak dost.....





(4)

